



INSTRUCTIONS FOR USE

TD75.13

Tumble dryer
T408HD

Carefully read the instructions for use before using the dryer.

Dear Customer,

We thank you for purchasing this quality ASKO product.






We hope it meets all your expectations. Scandinavian design combines pure lines, everyday functionality, and high quality. These are the key characteristics of all our products, and the reason why they are highly appreciated across the globe.

We kindly recommend you to read these instructions before using the appliance for the first time. The instruction manual also includes information on how you can help protect the environment.

TABLE OF CONTENTS

| | | | |
|---|----|--------------------------|----|
| Safety precautions | 3 | Cleaning and maintenance | 29 |
| Dryer description | 7 | Errors – what to do? | 35 |
| Before using the appliance for the first time | 8 | Servicing | 38 |
| Installation and connection | 9 | Technical information | 39 |
| Tips before drying | 16 | Program table | 41 |
| Drying process, step by step (1 – 7) | 18 | Disposal | 42 |
| System settings | 26 | Quick guide | 43 |

The following symbols are used throughout the manual and they have the following meanings:

| | | | |
|---|---|---|---------------------------------|
|  | Information, advice, tip, or recommendation |  | Warning – danger of hot surface |
|  | Warning – general danger |  | Warning – danger of fire |
|  | Warning – danger of electric shock | | |

Original instructions

See Quick guide on the last page.



GENERAL







Please read the instruction manual and save it for future reference.

- **Please do not use the tumble dryer if you have not read and understood these instructions or use first.**
- Failure to observe the instructions for use or inappropriate use of the tumble dryer may result in damage to the laundry or appliance, or injury to the user.
- Instructions for use are available on our website at www.asko.com.
- **Your dryer is intended solely for household use.**
- Before connecting the dryer to the power mains, please read carefully the instructions for use that describe the dryer and its correct and safe use. The instructions apply to several appliance types or models; thus, settings or equipment may be described herein which is not available in your dryer.
- Leave any repairs and similar tasks on the dryer to an expert. Unprofessional repair may result in an accident or major malfunction.
- After installation, the dryer should stand still for two hours before it is connected to the power mains.
- At least two persons are required to install the tumble dryer on top of a washing machine.
- The dryer may not be connected to the power mains using an extension cord.
- Do not connect the tumble dryer to an electrical outlet intended for an electric shaver or hair dryer.
- ⚠ If the power cord is damaged, it has to be replaced by the manufacturer, an authorized service technician, or a similarly qualified person, in order to avoid any hazards.
- ⚠ The appliance must not be supplied through an external switching device, such as a timer, or connected to a circuit that is regularly switched on and off by a utility.
- **After the drying process, unplug the dryer power cord from the power outlet.**
- In case of incorrect appliance connection, incorrect use, or servicing by an unauthorized person, the user shall bear the cost of any damage.
- Air in the dryer environment should not contain dust particles. The air where the dryer is installed should be thoroughly ventilated to prevent reverse flow of gases released from the gas appliances with open fire (e.g. fireplaces).
- Do not evacuate the air from the dryer through channels used for appliances or devices that use natural gas or other fuels for their operation (only applies to the evacuation dryer).

- Do not dry unwashed laundry in the dryer.
- Laundry stained with oil, acetone, alcohol, oil derivatives, stain removers, turpentine, wax, and wax removers should be washed in a washing machine with hot water and detergent before it is dried in the dryer.
- Clothing that includes latex, rubber parts, shower and bathing caps, and laundry or covers with rubber foam may not be dried in the dryer.
- Use laundry conditioners or similar products in compliance with manufacturer's instructions.
- Do not place the dryer behind lockable or sliding door, or door with a hinge on the opposite side of the dryer door hinge. Install the dryer in such way that the door can always be freely opened.
- Never block the air exhaust (evacuation opening).
- Do not place the dryer on a carpet with long fibres as this may impede air circulation.
- The air in the room where the dryer is installed may not contain dust particles.
- Make sure the fibres do not accumulate around the dryer.
- ⚠ Remove all objects such as lighters and matches from the pockets.
- After installation, wait for 24 hours before using the appliance. If the dryer has to be laid down on one of the sides during transport or servicing, place it with its left side, viewing from the appliance front, downwards (only applies to dryers with a heat pump).
- The appliance may not be in contact with a wall or adjacent furniture.
- If the dryer is connected to an air exhaust system already used for another appliance, a non-return valve must be installed. Reverse flow into the dryer could damage the appliance, and the non-return valve prevents such reverse flow (only applies to condenser dryers and dryers with a heat pump).
- A float will switch off the appliance if the condensed water pipe is clogged or if there is a risk of overflowing of the condensed water accumulated in the condensed water tank (only applies to condenser dryers and dryers with a heat pump).
- If you wish to move the dryer or store it in a non-heated room during winter, it is essential that you first empty the condensed water tank (only applies to the condenser dryers and dryers with a heat pump).
- Maximum drying capacity in kg (for the Cotton program) is indicated on the rating plate.

SAFETY

-  Only use the dryer to dry laundry that was washed with water. Do not dry any laundry that was washed or cleaned with flammable cleaners or substances (such as gasoline, trichloroethylene etc.) as this may result in an explosion.
- If you have cleaned your clothes with industrial cleaners or chemical substances, do not dry them in the dryer.
- The air exhaust hose may not be connected to an active chimney used to evacuate smoke or waste gases; into a shaft intended for ventilating rooms with combustion equipment; or into a chimney used by third parties. If smoke or waste gases return to the room where the dryer is installed, there is a danger of poisoning (only applies to evacuation dryer).
- The dryer is protected with an automatic switch-off system in case of overheating. The system switches off the dryer immediately if the temperature is too high (only applies to evacuation and condenser dryer).
- The overheating automatic switch-off system may activate if the net filter is clogged. Clean the filter, wait for the machine to cool down, and try running it again. If the machine still fails to switch on, call a service technician (only applies to the evacuation and condenser dryer).
-  **WARNING! The back of the dryer may get very hot during operation. Wait for the dryer to cool down completely before touching its back side.**
-  If you open the dryer door during the drying process, the clothes may be very hot and there is a risk of burns.
-  Never stop the drying cycle before it is completed; if you do interrupt the cycle for any reason, be careful when removing the laundry from the drum as it is very hot. Quickly remove the laundry from the drum and spread it to allow it to cool down as quickly as possible.

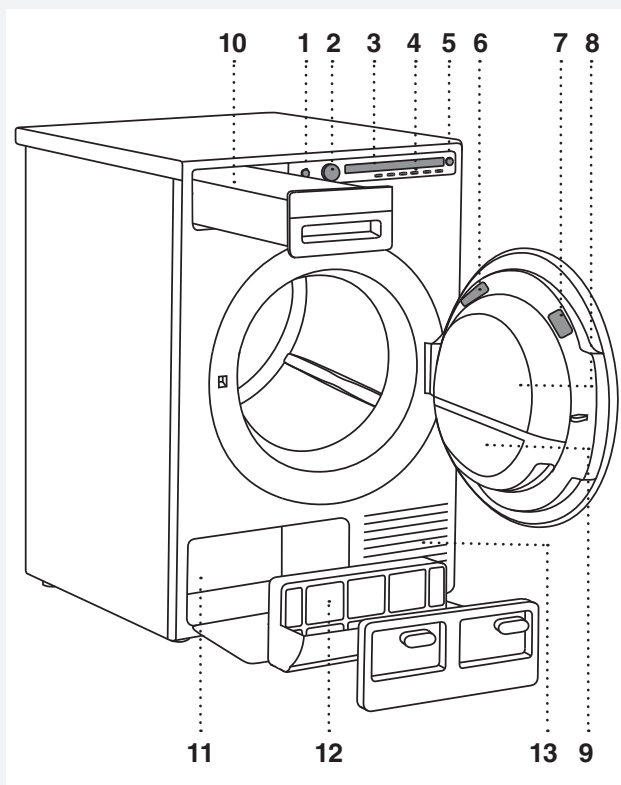
CHILD SAFETY

- Do not allow the children to play with the dryer.
- Prevent your children and pets to enter the dryer drum.
- Before closing the dryer door and running the program, make sure there is nothing except laundry in the drum (e.g. if a child climbed into the dryer drum and closed the door from the inside).
- **Activate the child lock.**
See chapter "SYSTEM SETTINGS", section Child Lock.
- **Do not let children younger than three years to come near the dryer, unless they are under constant supervision.**

- The dryer is made in compliance with all relevant safety standards. This dryer may be used by children aged 8 years and above and by persons with reduced physical, sensory or mental capabilities or lack of experience and knowledge, but only if they are supervised during the use of the appliance, if they have been provided relevant instructions regarding safe use of the dryer, and if they understand the hazards of inappropriate use. Make sure children do not play with the appliance. Make sure the children do not clean the dryer or perform any maintenance tasks without supervision.

SAVE THESE INSTRUCTIONS FOR FUTURE REFERENCE!

DRYER DESCRIPTION



1. Main switch (ON/OFF)
2. Program selector knob
3. Display unit
4. Program selector buttons
5. Button (start/pause/stop)
6. Rating plate with information about the dryer (on the inside of the dryer door)
7. QR and AUID code (on the inside of the dryer door)
8. Dryer door
9. Net filter
10. Condensate tank (depending on the model)
11. Heat pump
12. Heat pump filter
13. Air vents or opening

BEFORE USING THE APPLIANCE FOR THE FIRST TIME

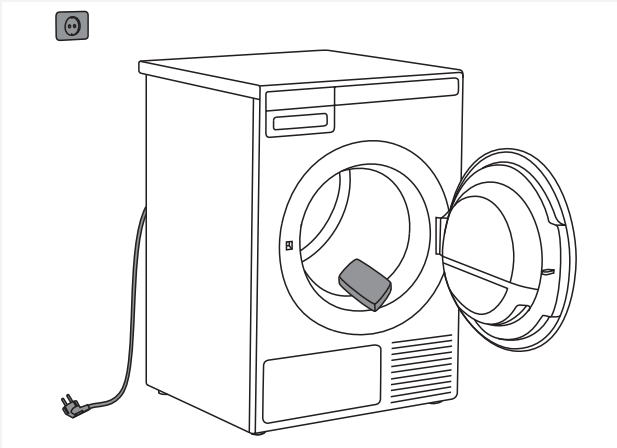
PACKAGING

Remove all packaging.

Please sort the materials in compliance with local recommendations (see chapter "DISPOSAL").

CLEANING

Disconnect the dryer from the power mains and open the door towards you. Clean the dryer drum with a damp cloth and a mild detergent.




 No program can be started while the door is open.

CHOOSING THE LANGUAGE

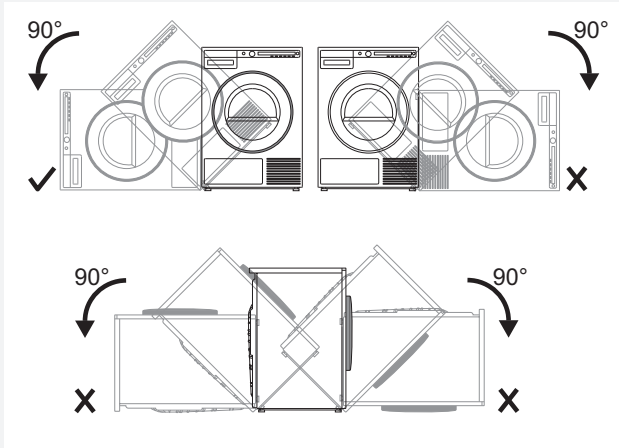
When the dryer is connected (see chapter "INSTALLATION AND CONNECTION") and switched on for the first time, choose the preferred language:

1. Press the button 2 or the program selector knob to scroll the list of languages. Confirm your selection by pressing the OK button.
2. Press the "Finalize" button to confirm your selection.

 When you run the dryer for the first time, or if the dryer has been out of use for a long time, slight hitting noise may appear. This is normal and it will disappear after a few drying cycles.

INSTALLATION AND CONNECTION

💡 After installation, wait for 24 hours without moving the appliance before using it for the first time. If the dryer has to be laid down on one of the sides during transport or servicing, place it with its left side, viewing from the appliance front, downwards.



DRYER PLACEMENT

The dryer can be either free standing or installed onto a washing machine.

The dryer emits heat. Therefore, do not place it in a very small room, as the drying process may be longer due to limited amount of available air.

💡 Do not place the dryer in a room where temperature can drop below 0 °C, as the machine may not operate correctly at such low temperatures, or freeze, which in turn can result in damage to the machine.

Install the dryer in a room with adequate ventilation and a temperature between 15 °C and 25 °C.

💡 Do not place the dryer behind lockable or sliding door, or door with a hinge on the opposite side of the dryer door hinge. Install the dryer in such way that the door can always be freely opened.

💡 Never block the air exhaust (evacuation opening).

💡 At least two persons are required to install the tumble dryer on top of a washing machine.

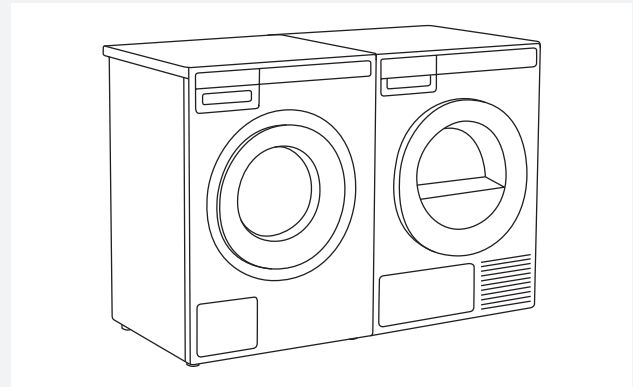
💡 Do not place the dryer on a carpet with long fibres as this may impede air circulation.

💡 The appliance may not be in contact with a wall or adjacent furniture. For optimum dryer operation, observe the clearance from the wall as shown in Fig.

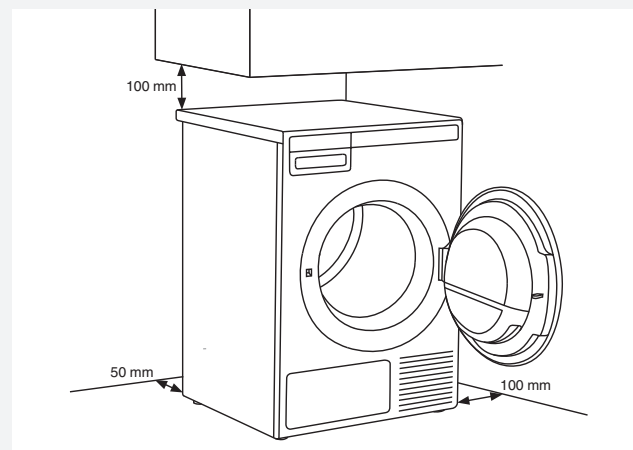
Free-standing appliance

The dryer may be placed adjacent to a washing machine.

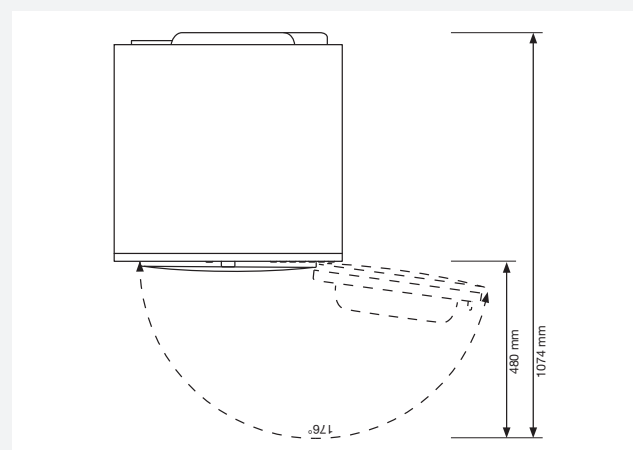
If the friction between the dryer feet and the floor is not sufficient, the dryer may move during operation. To prevent the dryer from sliding around, use a non-slip support or pad.



Clearance between the dryer and the wall



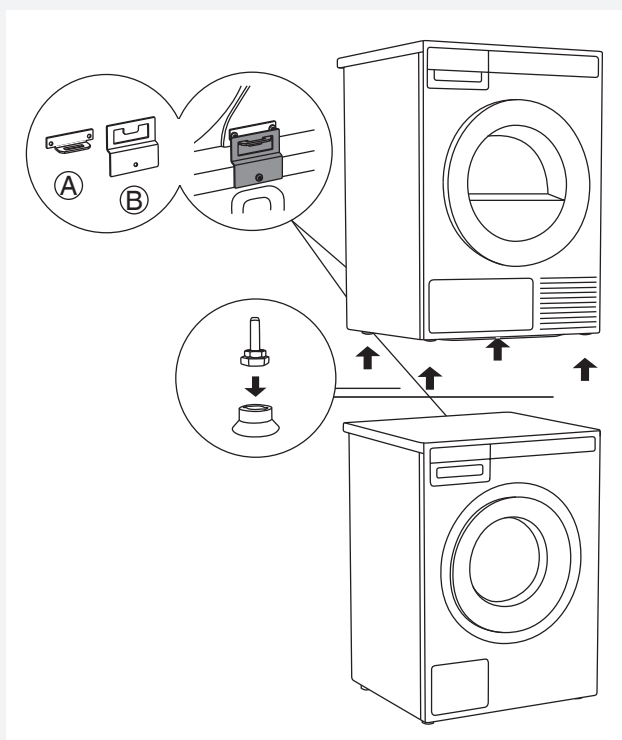
Opening the dryer door (top view)



Stacking on top of a washing machine

To stack the dryer on top of a washing machine, use the extra vacuum feet and the tipping guard (A+B), supplied in the cardboard box in the dryer drum.

Tipping guard part B is designed to fit on ASKO washing machines and it may be hard or impossible to mount on appliances of other brands. If the washing machine and dryer are not of matching dimensions or if you have installed a hidden helper between the two appliances, then binding plates are available as optional accessories at the service unit (... available only for HH and TD75 stacked on top of WM80 or WM85; not intended for any other combinations).

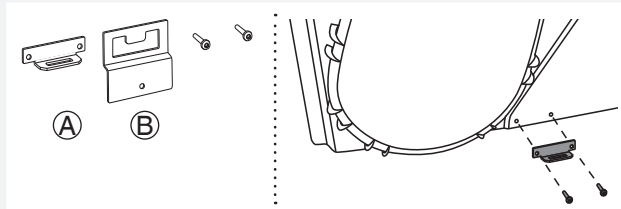


All ASKO washing machines can bear the weight of the dryer.

💡 Washing machine on which you wish to install the dryer must be able to bear the weight of the dryer (see washing machine's rating plate or technical information).

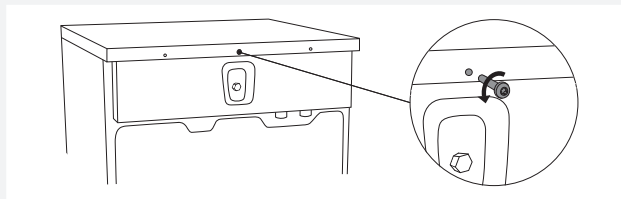
How to stack a dryer onto the washing machine (ASKO):

There is a cardboard box in the dryer drum, containing the vacuum feet and the tipping guard.

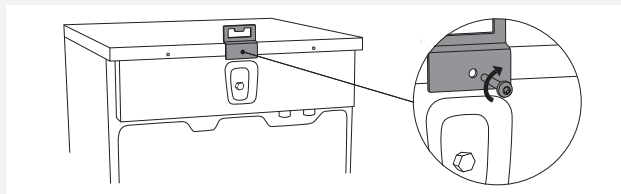


1 The tipping guard consists of two metal parts (A + B).

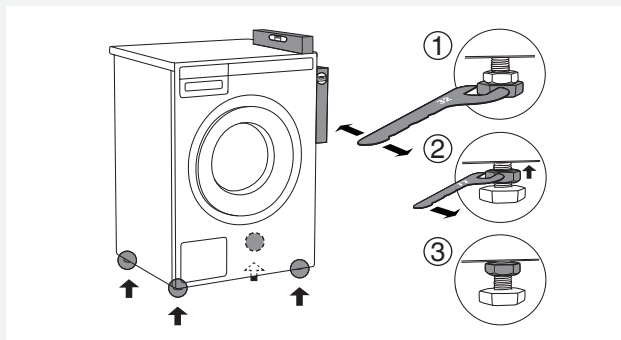
Use two screws to attach the A part to the back of the dryer.



2 Undo the screw on the back side of the washing machine.



3 Use the screw to attach the tipping guard (B part) to the back of the washing machine.



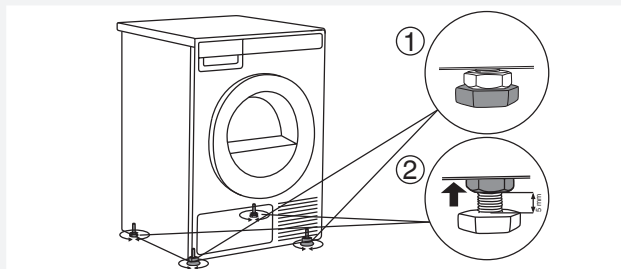
4 Level the washing machine so that it is stable.

1. Level the washing machine in longitudinal and traverse direction by rotating the adjustable feet using a No. 32 spanner.

The feet allow levelling by +/- 1 cm.

2. After adjusting the height of the feet, firmly tighten the jam nuts (counter nuts) using a spanner No 17, by turning them towards the bottom of the washing machine ↑.

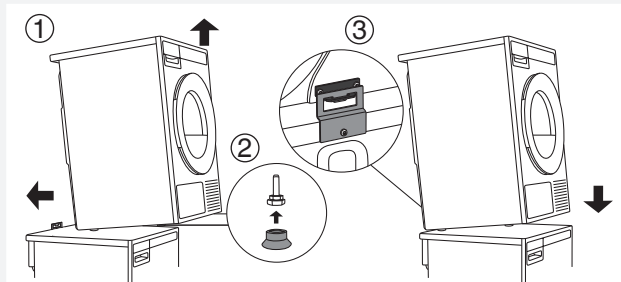
3. Tighten the jam nuts (counter nuts).



5 Set the dryer feet:

1. Tighten the front two feet all the way in.

2. Undo the back feet by 3.5 turns or 5 mm; then, fasten the jam nuts towards the bottom of the appliance ↑.



6 Place the dryer onto the washing machine:

1. Lift the front part of the dryer by 5 to 10 cm.

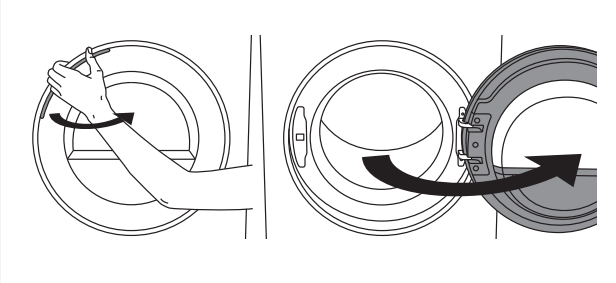
2. Attach the vacuum feet onto the front feet of the dryer.

3. Push the dryer into the tipping guard (so that the B part is inserted into the A part) and release it (See figure on previous page).

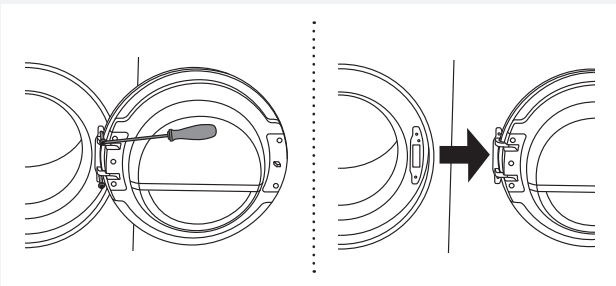
💡 Make sure the tipping guard is "locked"!

CHANGING THE DOOR OPENING DIRECTION

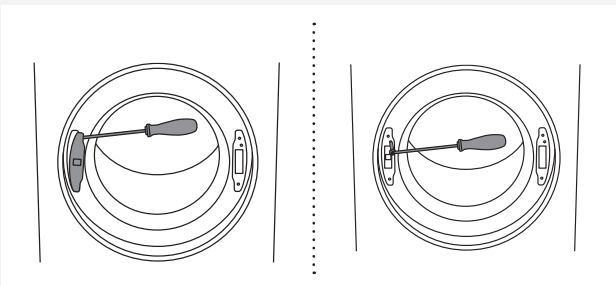
To change the direction of door opening, proceed as follows.



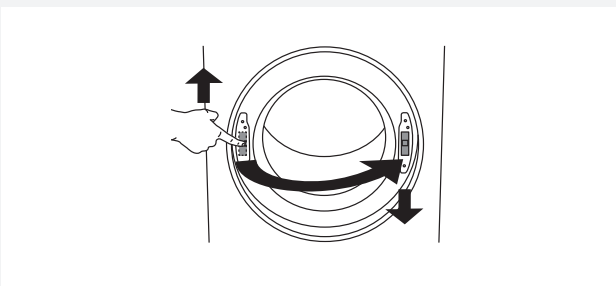
1 Open the door fully.



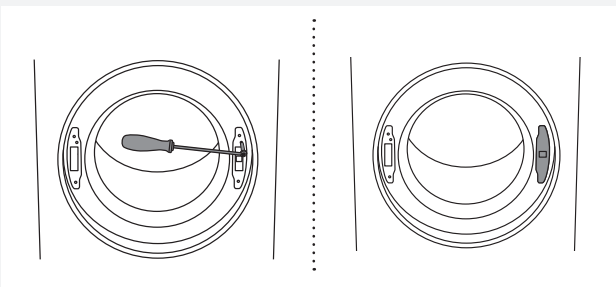
2 Undo the screws and remove the door.



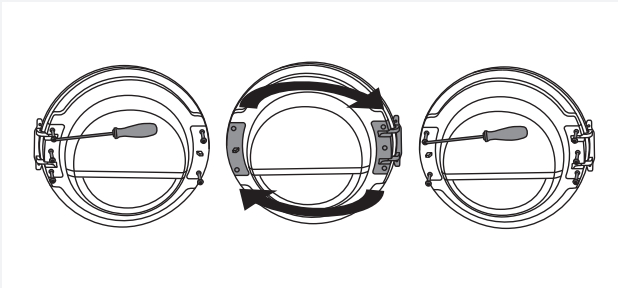
3 Use the screwdriver to remove the door lock cover and undo the screw on the door lock.




4 Push the door lock upwards and remove it. Move it to the other side and push it downwards.

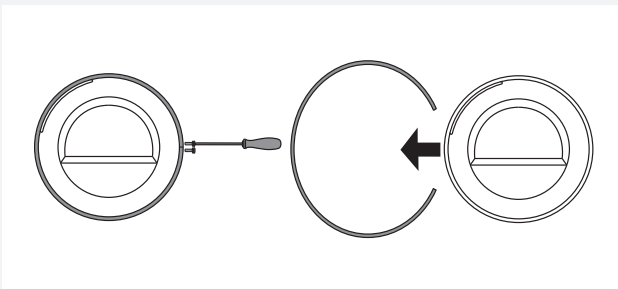


5 Fasten the screw on the door lock. Replace the door lock cover.

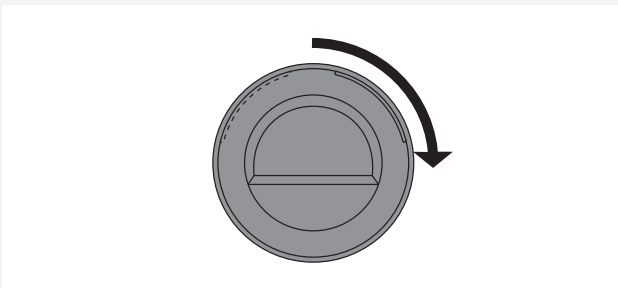


6 Undo the door hinge assembly (left) and the door latch assembly (right), switch their positions, and replace the screws (door hinge assembly to the right-hand side, door latch assembly to the left-hand side).

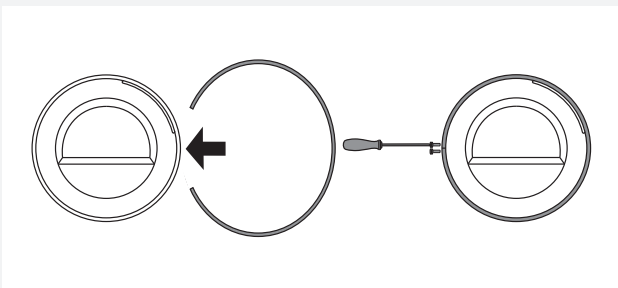
 Use the screwdriver to remove the plastic part more easily.



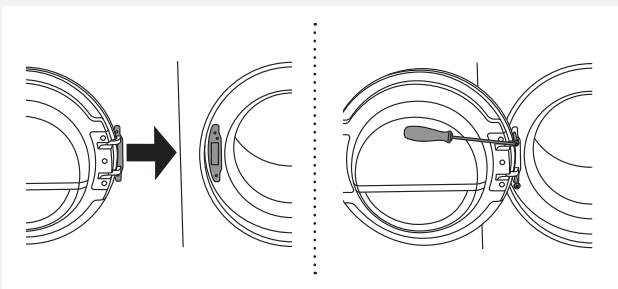
7 Undo the door ring and remove it temporarily.



8 Rotate the door glass cover by 90° so that the sign indicating the opening of the door is on the other side.



9 Rotate the door ring by 180°, install it onto the door, and fasten it with screws.

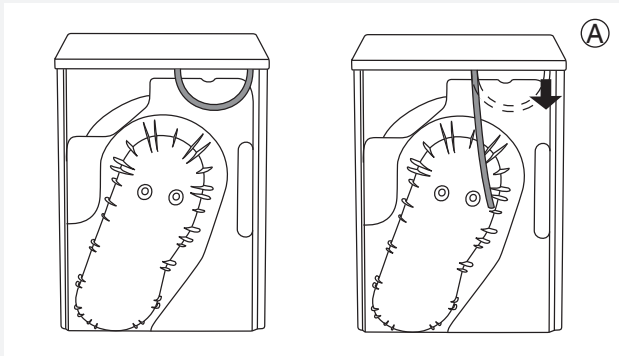


10 Replace the door on the door hinge and fasten the screws.

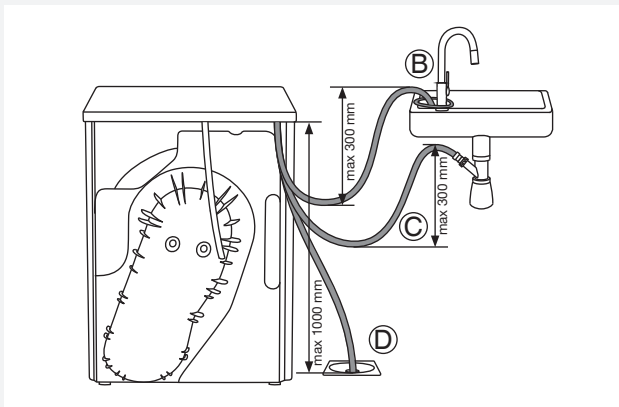
DRAINING THE CONDENSATE

The moisture from the laundry is extracted in the condenser unit and accumulated in the condensate tank. Condensate tank has to be emptied regularly (see chapter "CLEANING AND MAINTENANCE").

Interruption of the drying cycle due to full condensate tank can be avoided by running the condensate discharge hose found at the back of the appliance directly into a drain.





- 1** Remove the small short hose from the attachment (A).





- 2** Connect the supplied drain hose to the same attachment (A).

Run the condensate drain hose into a drain. Tie the hose onto a tap (B) so that it cannot slip during use. The drain hose can also be fed into the washbasin siphon (C) or directly into the floor drain (D). Then, the water is pumped directly into a washbasin, a siphon, or a floor drain.


 Do not pull the drain hose, and make sure it is not under tension, clamped, or bent.

 If you decide to run the condensate drain hose into a drain, siphon, or washbasin, make sure the hose is securely fastened. This will prevent any water spillage which could result in unexpected damage.

 Always use hoses that are supplied with the appliance.

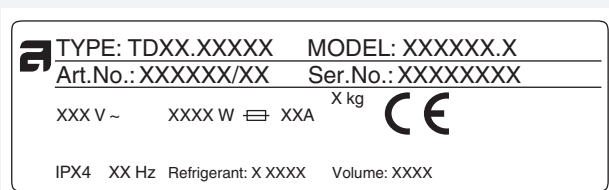
 If the dryer is connected to an air exhaust system already used for another appliance, a non-return valve must be installed. Return flow into the dryer could damage the appliance and the non-return valve prevents such flow.

CONNECTING TO THE POWER MAINS

 After installation, the dryer should stand still for two hours before it is connected to the power mains.


Connect the appliance to an earthed power outlet. After installation, the wall outlet should be freely accessible. The outlet should be fitted with an earth contact (in compliance with the relevant regulations).


Connection upon delivery




Information about your dryer is indicated on the rating (type) plate.

Use the type A differential current protection switch.

 The dryer may not be connected to the power mains using an extension cord.

 Do not connect the tumble dryer to an electrical outlet intended for an electric shaver or hair dryer.

 Any repair and maintenance pertaining to safety or performance should be done by trained experts.

TIPS BEFORE DRYING

This chapter includes several tips on how to prepare the laundry from drying.

LAUNDRY SORTING

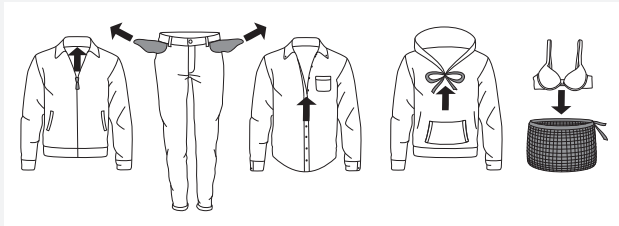
Sort the laundry according to:


- type,
- fabric thickness.

For the most even drying, make sure the laundry is made of a similar material.

CLOTHING

1. Close the buttons, zips, and hook-and-loop fasteners, so that they do not damage the fabric.
2. Turn the pockets inside out.
3. Place very sensitive clothes in a special-purpose laundry washing bag.
(The special purpose laundry bag is available as an optional accessory.)






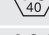

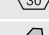
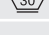
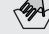








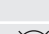




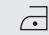




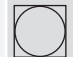





 Laundry to be dried in the dryer should be spun at a minimum of 1000 rpm. Higher spinning speeds will save energy and cut drying time.


LAUNDRY SYMBOLS


Observe the laundry symbols.

Textile maintenance symbols:


|  Washing | | |
|---|--|---|
| Normal | | Delicate |
|  | Max. washing temperature 90 °C |  |
|  | Max. washing temperature 60 °C |  |
|  | Max. washing temperature 40 °C |  |
|  | Max. washing temperature 30 °C |  |
|  | Hand wash only | |
|  | Do not wash | |
|  Bleaching | | |
|  | Bleaching in cool water | |
|  | Bleaching not allowed | |
|  Dry cleaning | | |
|  | Dry cleaning with all agents | |
|  | Perchloroethylene R11, R113, petroleum | |
|  | Dry cleaning in kerosene, pure alcohol, and R113 | |
|  | Dry cleaning not allowed | |
|  Ironing | | |
|  | Ironing with a hot iron with a maximum temperature of 200 °C | |
|  | Ironing with a hot iron with a maximum temperature of 150°C | |
|  | Ironing with a warm iron with a maximum temperature of 110°C | |
|  | Ironing not allowed | |
|  Natural drying | | |
|  | Drying on a flat surface | |
|  | Drying without prior spinning | |
|  | Drying on a clothes line or a hanger | |
|  Tumble drying | | |
|  | Drying at high temperatures | |
|  | Drying at low temperatures | |
|  | Tumble drying not allowed | |

MATERIALS (FABRICS) SUITABLE FOR DRYING IN A TUMBLE DRYER

 Material is suitable for tumble drying. Clothes dried in a tumble dryer are softer and lighter than air-dried clothes.

 The dryer does not cause any considerable wear of the fabric. The lint collected in the lint filter consists of dust and fabric fragments collected during the use of the laundry.

MATERIALS (FABRICS) THAT MAY NOT BE DRIED IN A TUMBLE DRYER

 This symbol means that the material is not suitable for drying in a tumble dryer.

Never tumble dry the following:

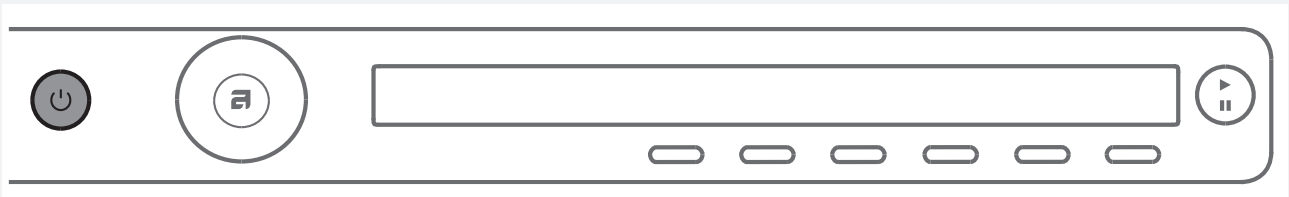
- clothing that was chemically cleaned (or dry-cleaned) at home,
- foam,
- glass fibres.

DRYING PROCESS, STEP BY STEP (1 – 7)

STEP 1: SORT THE FABRICS

See chapter "TIPS BEFORE DRYING"

STEP 2: TURN ON THE MAIN SWITCH.



Turning on

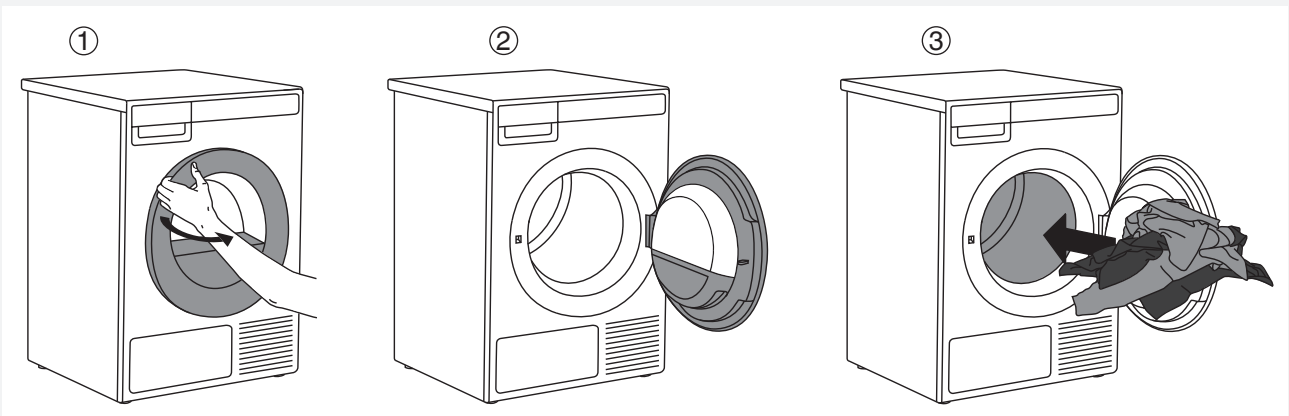
Press the  on/off button.

Turning off

Press the  on/off button.

STEP 3: OPEN THE DRYER DOOR AND INSERT THE LAUNDRY.

Open the dryer door towards you.



Place the laundry into the empty dryer drum. Make sure there aren't any other objects among the laundry, such as a detergent ball. Such objects could melt and cause damage to the dryer or your laundry.


Do not overload the drum! (See program table and observe your nominal load as indicated on the rating plate.)

If the dryer drum is overloaded, the laundry will be more wrinkled and perhaps unevenly dried.

STEP 4: CHOOSE THE DRYING PROGRAM.

Choose the program by rotating the program selector knob in either direction.




The program selector dial can be used when arrows  appear on the display. Select the program based on the type and remaining moisture of the laundry you wish to dry.


Anticipated program duration is indicated on the display.

Extra program settings can also be selected for each program. See STEP 5.

Choose between the following programs:

| Program | Max. kg | Description |
|--|---------|---|
| 1. AUTO EXTRA DRY (Automatic intensive drying) | 8 | This program is used to dry thicker, multi-layered, non-sensitive cotton laundry. |
| 2. AUTO DRY | 8 | This program is used to dry thicker, non-sensitive cotton laundry. |
| 3. AUTO NORMAL DRY  | 8 | This program is used to dry thicker, non-sensitive cotton laundry of similar thickness. |
| 4. AUTO IRON DRY | 8 | This program is used for drying sensitive cotton laundry. After the drying process, the laundry is suitable for ironing. |
| 5. AUTO JEANS | 4 | This program is suitable for drying jeans and clothes with extra-thick seams. |
| 6. AUTO SYNTHETICS | 3,5 | This is a delicate program for synthetics or delicate laundry containing synthetic fibres. |
| 7. AUTO TERRY | 5 | This program is suitable for large and small amounts of thick terry such as towels and bathrobes. |
| 8. AUTO DOWN | 1,5 | This program is suitable for drying pillows and duvets stuffed with down. It is a delicate program that will consistently dry this type of laundry. |
| 9. BEDDING | 5 | This program is suitable for large items, such as bedding, sheets etc. Adjusted drum rotation prevents these large items for creasing. |
| 10. SILK AND WOOL | 2 | This program is intended for softening of woollen and silk garments (garments are not dried completely after the end of this program). |
| 11. SHIRTS | 2 | This program is intended for drying shirts and blouses. Due to adjusted drum rotation, shirts and blouses do not crease. |
| 12. QUICK PRO | 2 | Select this program for non-sensitive garments washed with the Quick Program. |

| Program | Max. kg | Description |
|----------------------------|---------|--|
| 13. TIME PROGRAM | 4 | This program is used to dry thicker, multi-layered, non-sensitive cotton laundry. The program is also appropriate for smaller loads. If you set drying time that is too long, then it is possible for the laundry to dry excessively. This could result in shrinking or creasing, and the laundry may feel coarser. Program duration can be adjusted from 30 minutes to 4 hours (in 15-minute steps). |
| 14. AIRING | 2 | Use the airing program when you only wish to refresh, aerate, or soften your laundry. Program duration can be adjusted from 15 minutes to 3 hours (in 15-minute steps). |
| 15. SYSTEM SETTINGS | | Use the program selector knob to select System Settings. Confirm the selection by pressing ENTER (button "2"). Then, use the program selector knob to scroll the list of settings. The following can be selected: The following options are available: <ul style="list-style-type: none"> - Child Lock, - Language (language selection), - Programs (set of programs), - Display (display unit: contrast & logo), - Sounds, - Reset. See chapter "SYSTEM SETTINGS". |

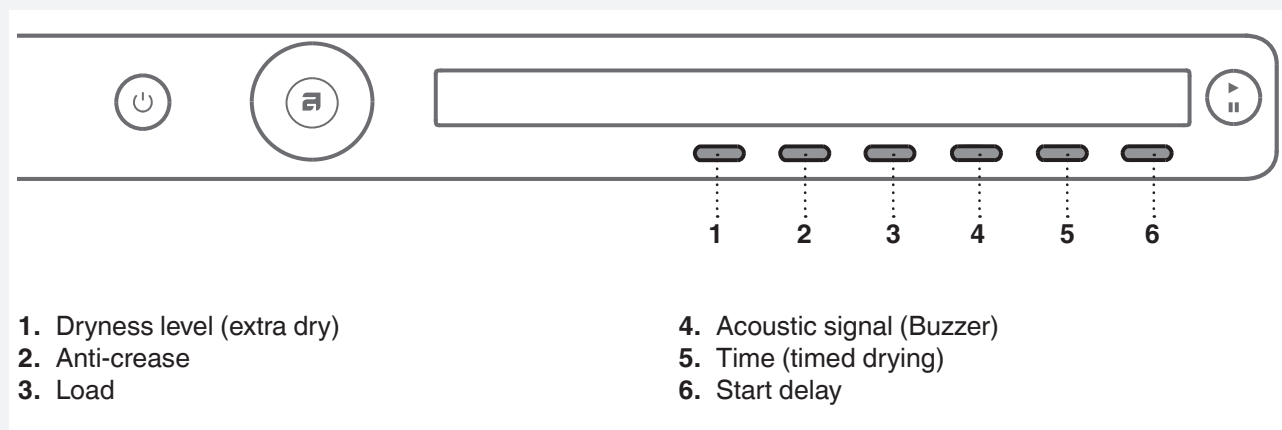
 If your laundry is not dried to the desired dryness level, use extra program settings or use a more suitable program.

STEP 5: CHOOSING THE PROGRAM SETTINGS

Using the program settings, the drying programs can be further adjusted to your wishes.


Some program settings may not be available for your selected program.

Selected program settings will remain stored after the end of the drying cycle and may be changed subsequently (except for delayed start which is not stored after the drying is complete).



Choose the program settings before pressing the START button.

When the drying program is in progress, program settings cannot be changed.

 Briefly pressing the button 1 under the program setting will display the information (INFO) about the program setting.

Following are the program settings that may be selected using the buttons 1 to 6:

1. Dryness level (extra dry)

By pressing the 1 key, you can choose between extra dryness levels (+, ++, +++).

Each time the button is pressed, the final level of laundry dryness and drying time will change.

2. Anti-crease

This function pertains to what happens after the drying cycle.

By pressing the button 2 you can choose the duration of the anti-crease program from 0 hours (I)⁰ to 4 hours (I)⁴, in 1-hour steps.

3. Load

By pressing the button 3, you can choose between loads of the dryer.

| | |
|-----------------------|--------------|
| <input type="radio"/> | Full load |
| <input type="radio"/> | Small load |
| <input type="radio"/> | Partial load |


Selection of actual load affects the initially displayed anticipated drying time.

4. Acoustic signal (Buzzer)

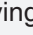
Press the button 4 to turn the buzzer indicating the end of the drying process on (ON) or off (OFF).

5. Timed drying

First, use the program selector knob to select the Timed Dry program.

Press the button 5  to select a drying time from 30 minutes to 4 hours, in 15-minute steps.




Use the button 6 (OK) to confirm the selected drying time. Press the **Start/ Pause/Stop**  button to start the drying process.

6. Start delay

Press the button 6 to choose the delayed start when you wish the drying program to start after a certain period of time..

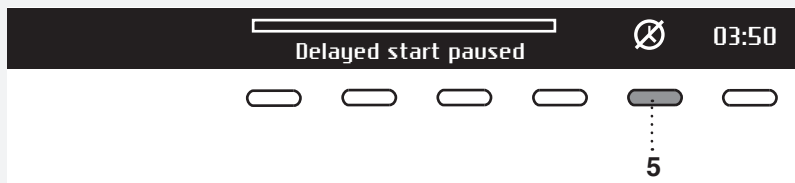



Press the button 6 for  to appear. Use the program selector knob or the button 6 to set the delay from 0.5 hour to 6 hours in 30-minute steps, and then from 6 hours to 24 hours in 1-hour steps.

Press the button 5 (OK) to confirm the selected start delay time.

Press the **Start**  button to start.

When the countdown reaches zero, the selected drying program will start automatically.

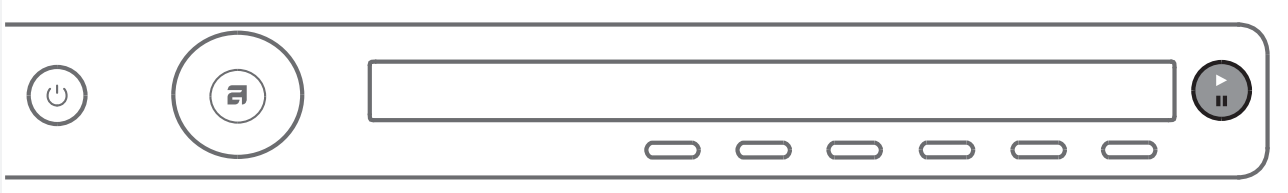


To cancel the delay and start the drying process immediately, press the button 5 .

To change the start delay time, press the **Start/Stop** button and hold it for 3 seconds. Then, use the button 6 or the program selector knob to set a new start delay time. After selecting the new delay time, press the **Start** button again.

STEP 6: CLOSE THE DOOR AND START THE DRYING PROCESS.

Close the dryer door and press the **Start/Pause/Stop** button.

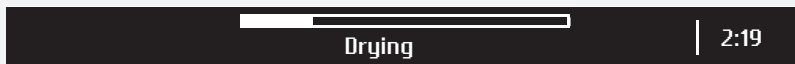


- ▶ Start (pressed briefly – start/resume)
- || Pause (pressed briefly – drying temporarily suspended)
Stop (press and hold for 3 seconds – stop or cancel)

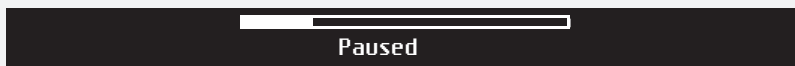


Remaining time

Depending on the selected program and load, anticipated drying time will be displayed in hours and minutes. Actual drying time will depend on the selected program, load, type of laundry, spinning rate etc. Actual drying time may be longer or shorter than initially displayed.

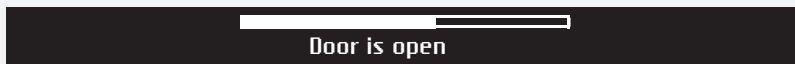


Pausing, stopping or changing the program

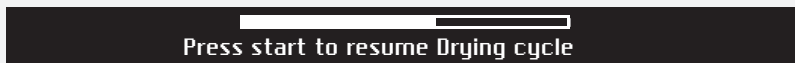


To stop the program, briefly press the Start/**Pause**/Stop button.

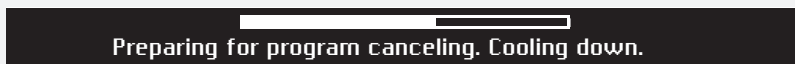
To resume a program, press the **Start**/Pause/Stop button again.



The drying program may also be paused by opening the dryer door.



To resume the programme, simply close the door and press the **Start**/Pause/Stop button.




To change or stop the drying program, press the Start/Pause/**Stop** button and hold it for 3 seconds.



The selected program will be stopped and the cooling stage will begin. Cooling time depends on the selected program.

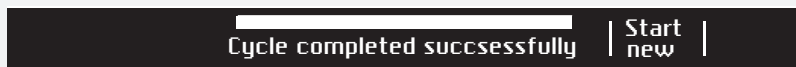
Only after the cooling is complete, can you use the program selector knob to select a new program and press the **Start**/Pause/Stop button.

 The final part of a tumble dryer cycle occurs without heat (cool-down cycle) to make sure that the items are not damaged.

A drying program can be paused using the ON/OFF button.

The dryer will switch off. After the dryer is switched on, press the Start button to resume the program.

STEP 7: END OF PROGRAM



After the end of the drying program, the display will indicate that the program has been successfully completed ("Cycle completed successfully").



If you have selected the "anti-crease" option, the dryer will continue to operate after the end of the drying cycle for the amount of time specified upon selection of this program setting.



After the drying cycle, store the program (see "Favourite programs").

Open the door towards you and remove the laundry from the dryer.





Clean the net filter in the door (see chapter "CLEANING AND MAINTENANCE").


Make sure the dryer drum is empty, then close the door.

If you do not do anything for 5 minutes after the end of the program, the display will switch off to standby mode in order to save power.

The display will light up again if you press the ON/OFF button or open the dryer door.

 After each drying cycle, clean the net filter in the door and empty the condensate tank. See chapter "CLEANING AND MAINTENANCE".

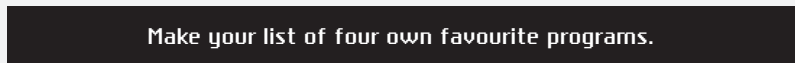
 A clogged net filter may result in activation of the automatic overheating switch-off device. Clean the filter, wait for the machine to cool down, and try running it again. If the dryer still fails to start, call a service technician.

 After the drying process, unplug the dryer power cord from the power outlet.

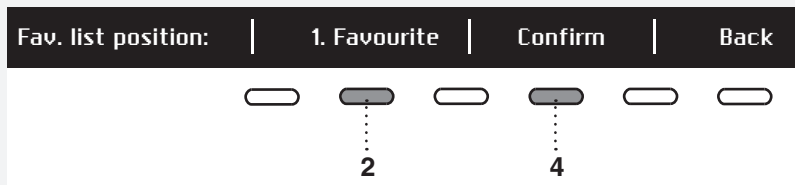
Favourite programs



After the end of the drying program, you can use the button 6 to store the program, including all extra settings, as your favourite program.



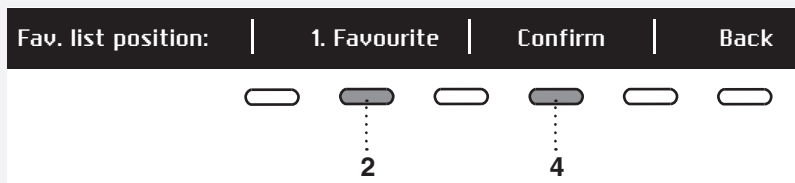
Up to 4 favourite programs can be stored.



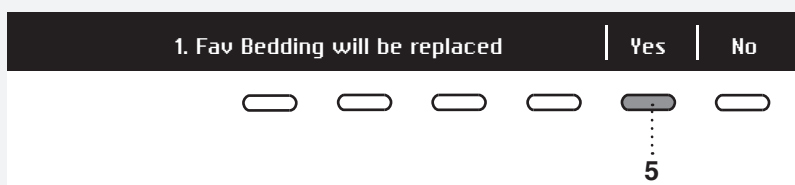
Choose the favourite program position (number) using the button 2; the most recently used program, including all settings, will be offered. To store a program, confirm with the button 4.

Changing a favourite program

If you wish to store a program after the end of the drying cycle, but there is no more room for another favourite program (only 4 favourite program slots are available), then one of the existing stored favourite programs can be substituted with a new one.



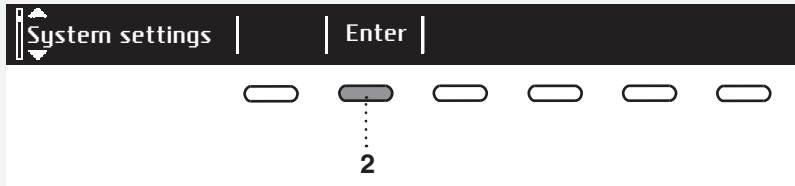
Use the button 2 to scroll through the list of Favourite programs. Press the button 4 to confirm the program to be replaced.



Confirm the replacement by pressing the button 5.

If you do not take any action for 5 minutes, the display will switch to standby mode. To activate the display, press the ON/OFF button or open the dryer door.

SYSTEM SETTINGS



In the main menu, use the program selector knob to select System Settings. Confirm the selection by pressing the button 2.

Then, use the program selector knob to scroll the list of settings that can be changed.

- Child Lock
- Language
- Programs
- Display (display unit: contrast & logo)
- Sounds
- Reset

Use the button 6 (BACK) to return to System Settings or to the main menu.

Press the INFO button to display brief information about the setting.

CHILD LOCK



Child lock can be activated by pressing the button 1 . This will prevent children from switching on the machine.



Press the button 1 to deactivate the child lock.

When the child lock is activated, no other function can be selected.



To temporarily (for 3 minutes) switch off the child lock, press the 1 and 4 buttons simultaneously and keep them pressed for 3 seconds.

LANGUAGE



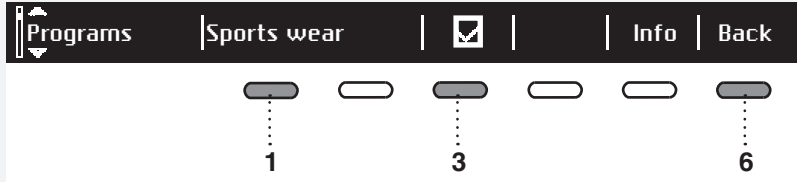
You can choose between 25 languages. Press the button 3 for to appear. Use the program selector knob or the button 3 to scroll the list of languages. Use the button 6 (OK) to confirm the selected language.



Use the button 6 to return to System Settings.

PROGRAMS

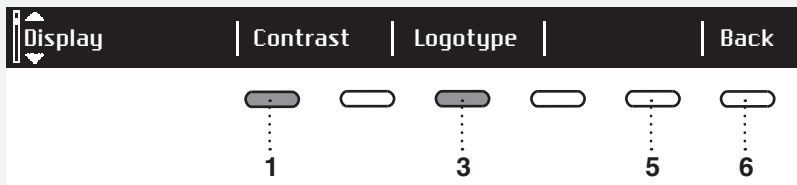
The main menu includes the entire set of programs that you can choose using the program selector knob. This setting allows only displaying the selected program in the main menu.



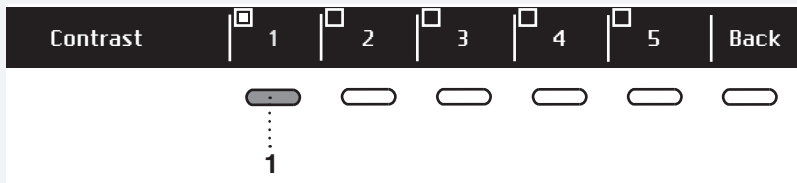
Press the button 1 for to appear. Use the program selector knob or the button 1 to select a program. Use the button 3 to set whether this program is to be displayed or not: On / Off .

Use the button 6 to return to System Settings.

DISPLAY UNIT



Set the contrast and logo display.



Use the buttons 1 to 5 to set the contrast.

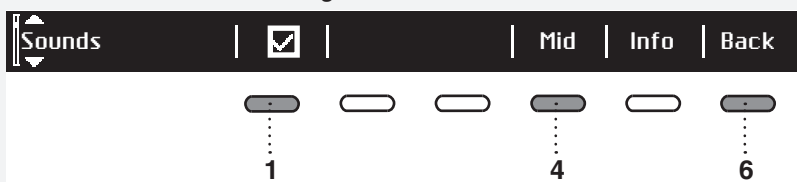


Use the button 1 to toggle logo display on or off . The symbol means that logo will appear on the display when the machine is turned on.

Use the button 6 to return to System Settings.

SOUNDS

Choose whether audible signals are switched on or off.



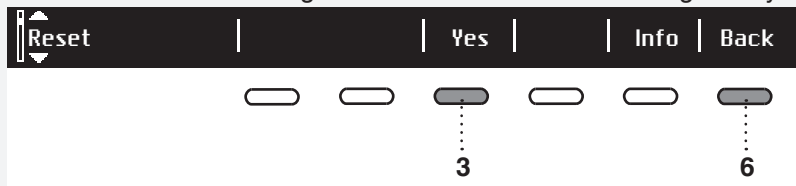
Use the button 1 to switch acoustic signal on or off .

Use the button 4 to choose between the following settings: low, mid, and high. As you scroll through the options, a sample audible signal will be sounded.

Use the button 6 to return to System Settings.

RESET


This means that all settings will return to the default settings and your own settings will be deleted.



Confirm the selection by pressing the button 3 (YES).

Press the button 6 to return to System Settings.

NOISES

 In the initial stage of drying or during drying, the compressor and the pump may cause noise which, however, does not affect the dryer operation.

Humming noise: this is the sound of the compressor unit. The level of noise depends on the program and the drying stage.

Whirring noise: from time to time, the compressor unit is ventilated.

Pumping noise: the pump is pumping the condensate into the condensate tank.

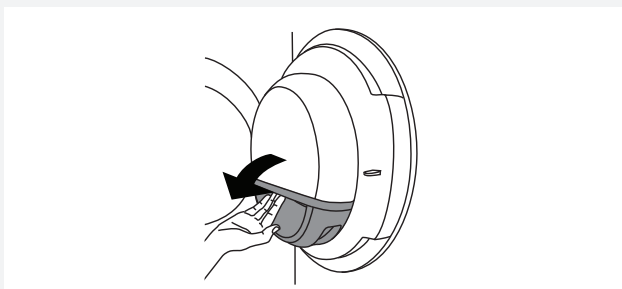
Clicking noise: clicking noise is caused by automatic cleaning of the heat exchanger (compressor).

Rustling water noise: can be heard during automatic cleaning.

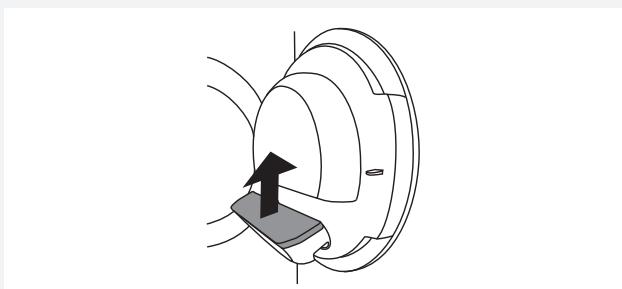
Rattling noise: can be heard during drying if laundry has any hard parts (buttons, zippers etc.)

CLEANING AND MAINTENANCE

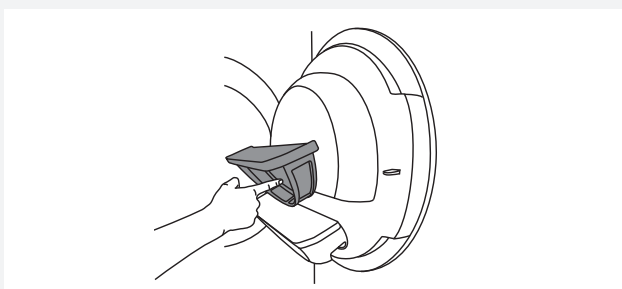
CLEANING THE NET FILTER IN THE DOOR



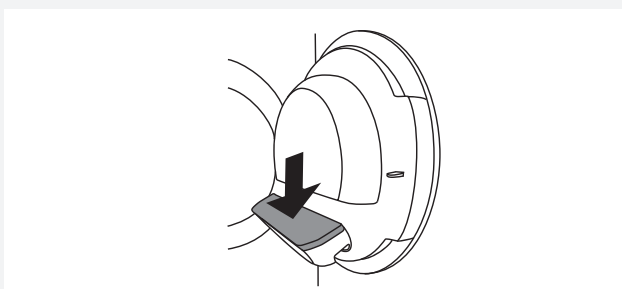
1 Open the filter housing.



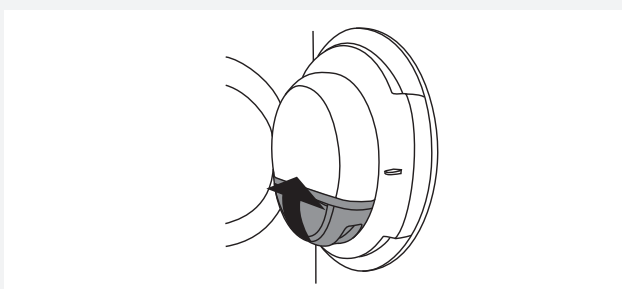
2 Pull out the net filter.




3 Gently scrape the filter to remove the lint lining (fibres and threads).





4 Replace the net filter.



5 Close the filter housing.

 Make sure the net filter is correctly inserted into the filter housing.

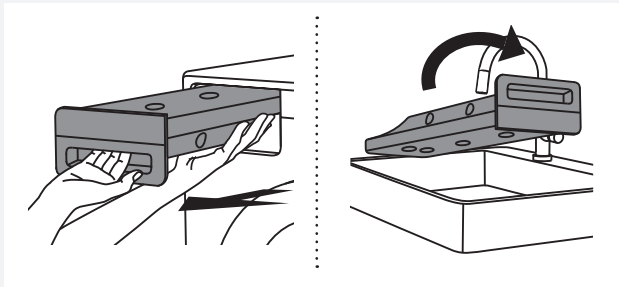
 Clean the net filter after each drying cycle.

 The dryer may never operate without a net filter or if the net filter is damaged.

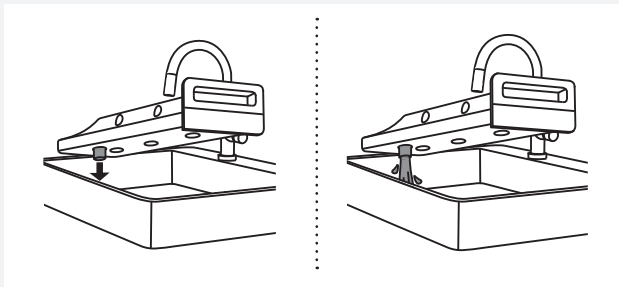
EMPTYING THE CONDENSATE TANK

💡 After each drying cycle, empty the condensate tank.

If the condensate tank is overflowing the drying program will be paused automatically. A warning will appear on the display unit that the condensate tank has to be emptied.

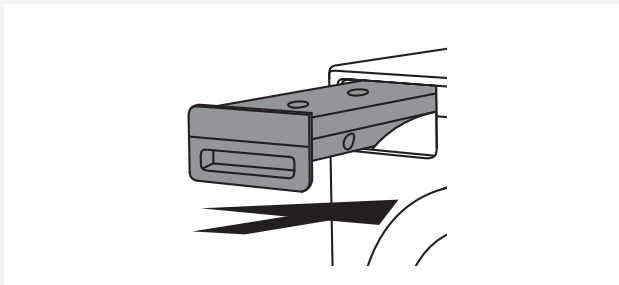


1 Pull out the condensate tank from the dryer, then turn it upside down over a washbasin, sink, or any suitably sized vessel.



2 Discharge the water through the condensate drain opening.

To make draining the tank easier, pull out the nozzle at the condensate drain.



3 Replace the condensate tank into the dryer housing.

💡 Before cleaning, make sure to switch off the appliance and disconnect it from the power mains (unplug the power cord from the outlet).


💡 Water from the condensate tank is not potable. If thoroughly filtered, it can be used for ironing.

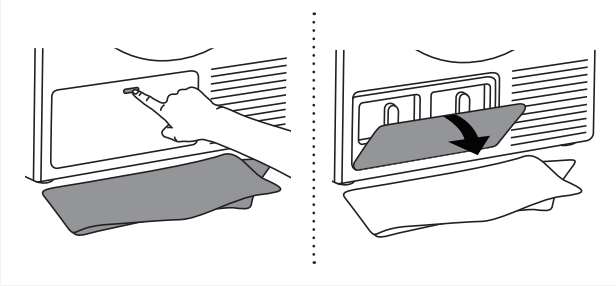
⚠️ Never add chemicals or fragrances into the condensate tank.

💡 Condensate tank does not require draining if the drain hose is connected directly to a washbasin or a bathroom floor drain (see chapter "INSTALLATION AND CONNECTION/Draining the condensate").

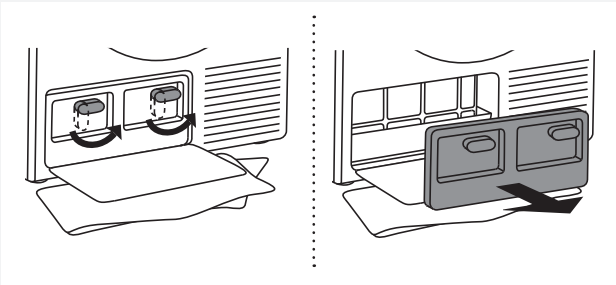
💡 Before moving the dryer or before storing it in a non-heated room during the winter, the condensate tank has to be emptied.

CLEANING THE HEAT PUMP FILTER

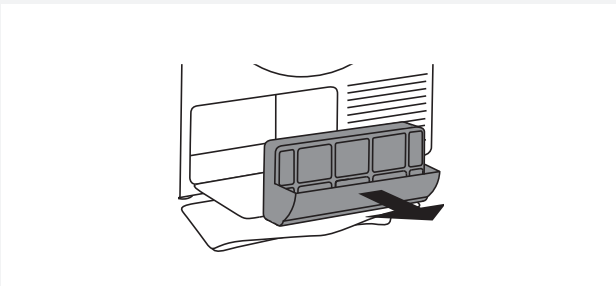
 Before cleaning, make sure to switch off the appliance and disconnect it from the power mains (unplug the power cord from the outlet).



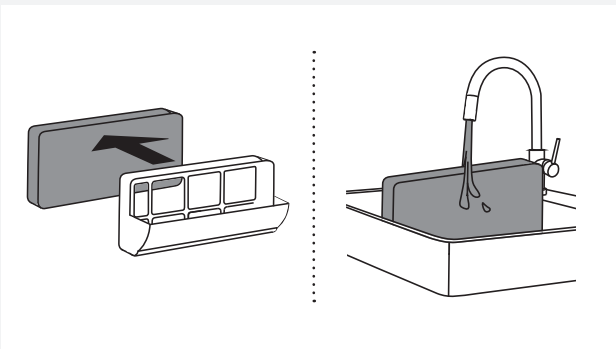
1 During cleaning, some water may be spilled. It is therefore recommended to place an absorbent cloth on the floor. Open the outer cover.



2 Hold the levers on the inside cover and rotate them upwards. Remove the inside cover.




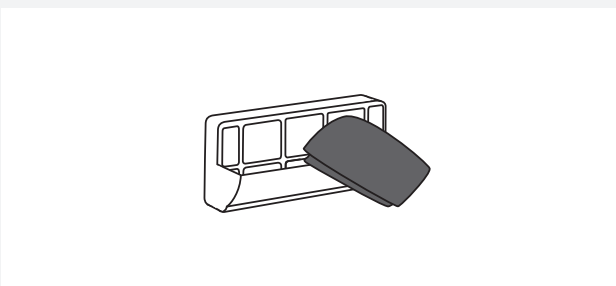
3 Use the handle to pull out the heat pump filter.




4 Push the foam part of the heat pump filter from the housing. Wash it under running water and dry it before replacing it in the filter housing.


The filter may be washed in the washing machine, with the rinse program on low spin speed. Dry the filter before replacing it in the filter housing.

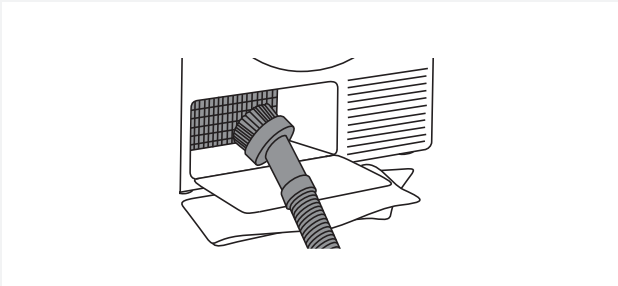
 Clean the foam filter at least after every 5 drying cycles.



5 Use a soft dry cloth to also clean the heat pump filter housing and net.

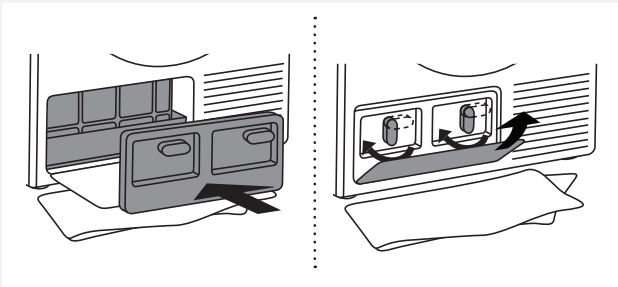
 Lower part of the housing contains a strainer which shall be cleaned thoroughly.

 Clean the heat pump filter housing and net after each drying cycle.



6 Clean the heat pump cooling fins with a vacuum cleaner (with a brush attachment). This should be done very gently to prevent damaging the very thin cooling fins.

💡 Heat pump cooling fins should be cleaned occasionally or if it necessary.



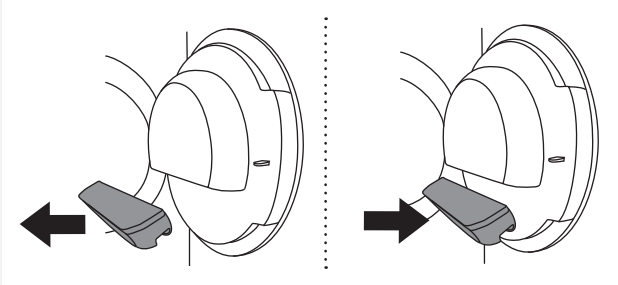
7 Replace the heat pump filter into the housing.

Replace the inside cover and rotate the levers downwards.

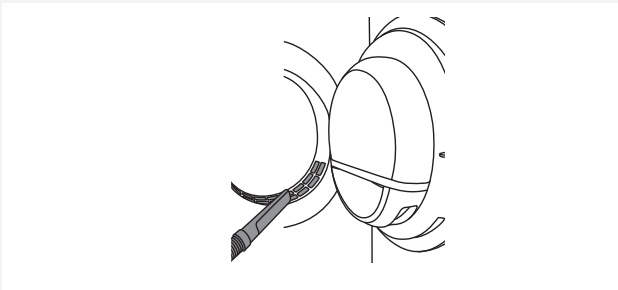
Close the outer cover.

💡 The heat pump filter has to be correctly placed into its slot. Otherwise, the heat exchanger installed inside the dryer may be clogged.

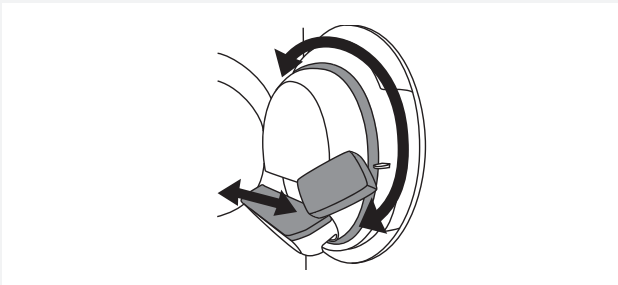
ADDITIONAL INFORMATION REGARDING CLEANING



If you have inadvertently removed the **entire** net filter housing in the dryer door, replace it in the same position.



Opening on the lower side of the door should occasionally be cleaned with a vacuum cleaner.



If necessary, clean the filter housing and door gasket as well.

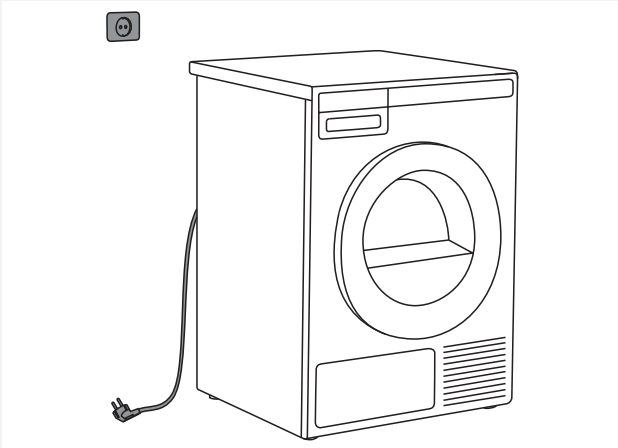
CLEANING THE APPLIANCE EXTERIOR

Wipe the dryer exterior using a soft damp cotton cloth and mild detergent.

Do not use any cleaning agents that could damage the dryer (please observe the recommendations and warnings provided by the manufacturers of the cleaning agents).

Wipe all parts of the dryer with a soft cloth until dry.

💡 Keep the area around the dryer clean and cool. Dust, heat, and humidity will extend the drying time.




💡 Always disconnect the dryer from the power mains before cleaning.

ERRORS – WHAT TO DO?

Disturbances from the environment (e.g. the power grid) may result in various error reports (see Troubleshooting table). In such case:

- Switch off the appliance, wait for 1 minute, switch the appliance back on, and repeat the drying program.
- If the error persists, call an authorized service unit.
- You will be able to solve most of the problems in dryer operation by yourself (see troubleshooting table below).
- Repairs may only be carried out by an adequately trained person.
- Repair or any warranty claim resulting from incorrect connection or use of the dryer shall not be covered by the warranty. In such cases, the costs of repair shall be charged to the user.

 The warranty does not cover the errors or failures resulting from disturbances from the environment (lightning strike, power grid failures, natural disasters etc.).

| Problem/error | Cause | What to do? |
|---|---|---|
| The machine will not start. | • The main switch is not switched on. | • Check whether the main switch is on. |
| | • There is no voltage in the power outlet. | • Check the fuse. • Check if the power cord plug is correctly inserted into the power outlet. |
| There is voltage in the outlet, but the drum does not spin ... The dryer does not work. | • Program was not started in accordance with the instructions. | • Re-read the instructions for use again. |
| | • Open the door. | • Check if the door is closed properly. |
| | • Condensate tank is full (only applies to condenser dryers and dryers with a heat pump). • Perhaps the Delayed Start option was selected. | • Empty the condensate tank (see chapter "CLEANING AND MAINTENANCE") (only applies to condenser dryers and dryers with a heat pump). • To cancel the Delayed Start option, press 5 the Skip button. |
| The machine stops operating completely during a program. | • The net filter may be clogged. As a result, the temperature in the dryer rises, which in turn causes overheating, and the dryer switches off. | • Clean the net filter (see chapter "CLEANING AND MAINTENANCE"). • Wait for the machine to cool down, and try running it again. If the dryer still fails to start, call a service technician. |
| Laundry not dried or drying takes too long. | • Filters are not clean. | • Clean the filters (see chapter "CLEANING AND MAINTENANCE"). |
| | • Dryer is placed in a closed room; room that is too cold; or room that is too small and the air overheats as a result. | • Make sure there is adequate supply of fresh air to the dryer; for example, open the door and/or window. • Check if the temperature in the room where the dryer is installed is too high or too low. |
| | • Laundry was not sufficiently wrung or spun. | • If the load is still wet after completed drying cycle, an appropriate drying program should be run again (after cleaning filters). |
| | • Amount of laundry dried in the appliance is too large or insufficient. | • Use a suitable program or extra functions. |
| | • Laundry (such as bedding) gets tangled. | • Close the buttons or zippers on the laundry before drying. Select a suitable program (e.g. the bedding program). • After the drying process, loosen the laundry and select an additional drying program (e.g. timed drying program). |

| Problem/error | Cause | What to do? |
|--|--|---|
| Unevenly dried laundry. | • Laundry of varying types and thickness, and excessive amount of laundry. | • Make sure you have sorted the laundry by type and thickness, whether you have added a suitable amount of laundry to the drum, and whether you have selected a suitable program. |
| A slight hitting noise appears. | • If the dryer is out of use for a long period of time, the same points of load-bearing elements or components are under stress for a long time. | • The noise will subside without any intervention. |
| The door opens during drying. | • Excessive load on the door (too much laundry in the drum). | • Reduce the amount of laundry. |

FAILURE DISPLAY

In case of a failure while a program is in progress, the relevant Error X is indicated on the display unit.



Press the INFO button to display the error description.

Switch off the dryer and turn it back on.

Errors indicated on the display unit (depending on the model) may include the following:

| Problem/error | Error indication on the display | What to do? |
|----------------|--|--|
| ERROR_0 | E-0 - Please contact ASKO Service. | Control unit failure. Call a service technician. |
| ERROR_1 | E-1 - Thermistor fault. Please contact ASKO Service. | Temperature sensor failure. Call a service technician. |
| ERROR_3 | E-3 - Pump failure. Please contact ASKO Service. | Failure on the pump for pumping the condensate into the condensate tank Call a service technician. |
| ERROR_4 | E-4 - Please clean filters or contact ASKO Service. | Filter error. Clean the filters. See chapter "CLEANING AND MAINTENANCE" or call a service technician. |
| ERROR_5 | E-5 - Max program time | Call a service technician. |

INFORMATION before, during, and after the program (depending on the model)

| Error indication on the display | What to do? |
|--|---|
| EN: STEAM TANK IS EMPTY. PLEASE FILL WATER | Fill the steam generator tank with distilled water. Pour the water through the filter tank of the steam generator in the condensate tank housing. See chapter "BEFORE USING THE APPLIANCE FOR THE FIRST TIME" |
| EN: STEAM TANK FULL. | Call a service technician. |
| EN: DOOR IS OPEN, PLEASE CLOSE THE DOOR | Close the dryer door. |
| EN: OPTION NOT AVAILABLE AT THIS PHASE OF CYCLE. | Select an option that is still available. |
| EN: CYCLE WAS INTERRUPTED BY POWER FAILURE. PLEASE RESUME | Press the START button to restart or resume the program. |
| EN: PLEASE EMPTY THE TANK BEFORE RESUMING A CYCLE. | See chapter "CLEANING AND MAINTENANCE". |
| EN: CLEAN DOOR FILTER | See chapter "CLEANING AND MAINTENANCE". |
| EN: CLEAN CONDENSER | See chapter "CLEANING AND MAINTENANCE". |
| EN: PLEASE EMPTY THE TANK FOR CONDENSED WATER AND CLEAN DOOR FILTER. | See chapter "CLEANING AND MAINTENANCE". |
| EN: CHILD LOCK IS ON. PRESS BUTTONS FOR 3 SEC TO UNLOCK | See chapter "CLEANING AND MAINTENANCE". |

SERVICING


BEFORE CALLING A SERVICE TECHNICIAN


See the chapters "TROUBLESHOOTING" and "CLEANING AND MAINTENANCE" and see if you can resolve the problem yourself.

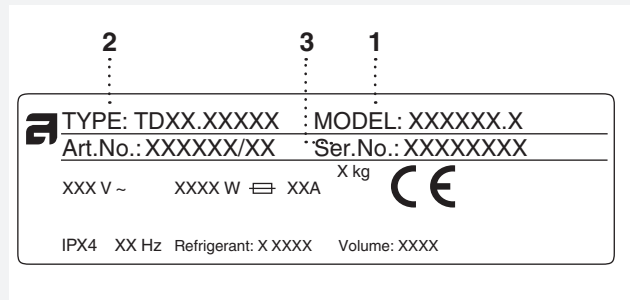
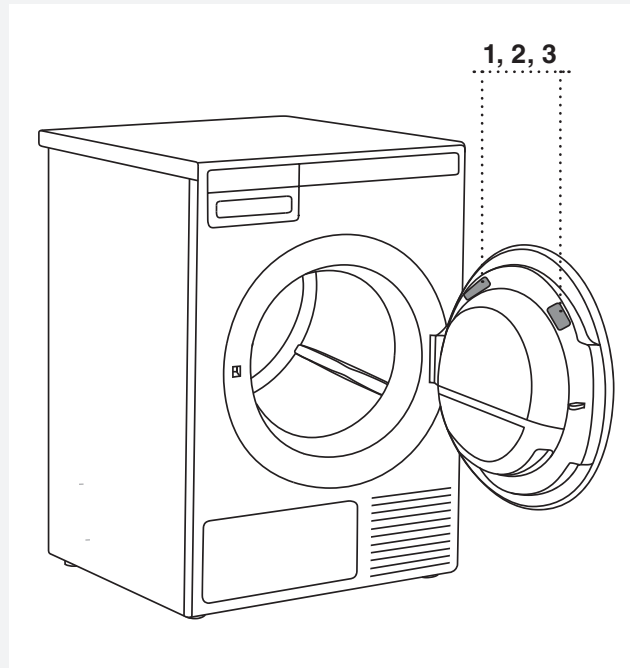
When you contact a service centre, please state the model (1), type (2), and serial number (3) of your dryer.

Model, type, and serial number are indicated on the rating (type) plate located on the interior side of the dryer door.

QR and AUID code are also located on the inside of the dryer door.

 In case of a failure, only use approved spare parts by authorized manufacturers.


 Repair or any warranty claim resulting from incorrect connection or use of the dryer shall not be covered by the warranty. In such cases, the costs of repair shall be charged to the user.



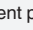
TECHNICAL INFORMATION

INFORMATION ON ENERGY LABELS

Information sheet pursuant to the Commission Regulation (EU) No. 392/2012

| | |
|--|---|
| Model | TD75.13 |
| Max. drying capacity | 8 kg (See rating plate) |
| Energy efficiency class | A+++ |
| Annual energy consumption | 177 (kWh/year) ¹⁾ |
| Power consumption | |
| Automatic normal drying with maximum load (E_{dry}) | 1,44 (kWh) |
| Automatic normal drying with half load ($E_{dry1/2}$) | 0,82 (kWh) |
| Power consumption | |
| Power consumption when off (P_o) | 0,3 (W) |
| Power consumption when on (P_i) | 0,3 (W) |
| Condensation efficiency | |
| Automatic normal drying with maximum and half load (C_t) | 91 (%) |
| Automatic normal drying with maximum load (C_{tdry}) | 91 (%) |
| Automatic normal drying with half load ($C_{tdry1/2}$) | 91 (%) |
| Drying program | Auto normal dry ²⁾  |
| Program duration (minutes) | |
| Automatic normal drying with maximum and half load (T_t) | 143 (minutes) |
| Automatic normal drying with maximum load (T_{dry}) | 190 (minutes) |
| Automatic normal drying with half load ($T_{dry1/2}$) | 108 (minutes) |
| Noise | 64 (dB(A)) |
| Dryer type (A = automatic, NA = not automatic) | A |
| Standby duration | 5 (minutes) |
| Condensation efficiency class | A ³⁾ |

¹⁾ Based on 160 standard drying cycles with the Auto Normal Dry program  with full and half load, in compliance with EN61121. Actual power consumption will depend on the way the appliance is used.

²⁾ Auto Normal Dry  program is intended for drying of normally wet cotton laundry. In terms of total energy consumption, it is the most efficient program for drying cotton laundry.

³⁾ On a scale from G (the least efficient) to A (the most efficient).

STANDARD TESTS

For standard tests, the condensate drain hose should be connected to a drain.

| | |
|----------------------|---|
| Europe | |
| Energy declaration | EN 611 21 (392/2012). Program 3 (Auto normal dry) ☐, 8 kg; cotton, normal temperature, time save. The appliance has been tested with 16 A single-phase current. |
| Noise testing method | IEC 60 704-2-6. |

TECHNICAL INFORMATION

| | |
|---------------------|--|
| Height | 845 mm |
| Width | 595 mm |
| Depth | 640 mm |
| Weight (net) | 57 kg |
| Drum volume | 117 l |
| Maximum drying load | See rating plate |
| Speed | 50–55 rpm |
| Rated power | See rating plate |
| Drum material | Stainless steel |
| Housing material | Hot-dip galvanized and powder coated sheet metal, or stainless steel sheet |

This product contains fluorinated greenhouse gases.

| | |
|----------------------------|---------|
| Type of refrigerant | R134a |
| Quantity of refrigerant | 0,34 kg |
| Total GWP | 1430 |
| CO ₂ equivalent | 0,486 t |
| Hermetically sealed. | |

PROGRAM TABLE

The following table lists the power consumption and duration for several programs. The table shows the effect on drying parameters at varying spinning speeds during the washing cycle. Actual consumption can vary depending on the room temperature, humidity, load, changes in power supply, and selected options.

The following requirements apply to the consumption values specified below.

| | |
|-----------------------|------------------|
| Inlet air temperature | room temperature |
| Inlet air humidity | 50–60% |
| Drying temperature | Normal |

| Program | Amount | Spinning speed (rpm) | Residual humidity, approximately (%) | Power consumption, approximately (kWh)** | Program duration, approximately (h:min)** |
|--------------------|--------|----------------------|--------------------------------------|--|---|
| Auto normal dry* ☐ | ○ | 1000 | 60 | 1,44 | 3:10 |
| | ⊖ | 1400 | 50 | 1,00 | 2:05 |
| | ⊖ | 1400 | 50 | 0,79 | 1:40 |
| Auto iron dry* | ○ | 1000 | 60 | 1,15 | 2:20 |
| | ⊖ | 1400 | 50 | 0,67 | 1:25 |
| | ⊖ | 1400 | 50 | 0,60 | 1:10 |
| Auto synthetics* | ⊖ | 1000 | 40 | 0,46 | 1:00 |

| | |
|---|--------------|
| ○ | Full load |
| ⊖ | Partial load |
| ⊖ | Small load |

* Test program pursuant to EN61121.

**Values can differ from the ones specified, depending on the type of material, laundry mix being dried, remaining humidity in the fabric, and load.

DISPOSAL

Disposal / recycling of packaging



Our product packaging is made of environmentally friendly materials that can be recycled, disposed of, or destroyed without any hazard to the environment. To this end, packaging materials are labelled appropriately.

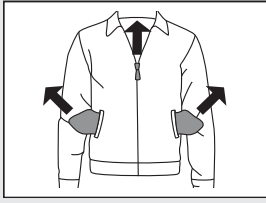
The symbol on the product or its packaging indicates that the product should not be treated as normal household waste. The product should be taken to an authorized collection centre for waste electric and electronic equipment processing.

When disposing of an appliance at the end of its useful life, remove all power cords and destroy the door latch and switch to prevent the door from locking or latching (child safety).

Correct disposal of the product will help prevent any negative effects on the environment and health of people which could occur in case of incorrect product removal. For detailed information on removal and processing of the product, please contact the relevant authority in charge of waste management, your waste disposal service, or the store where you bought the product.



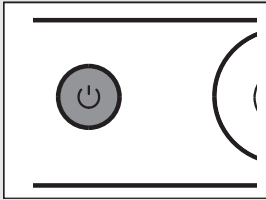
QUICK GUIDE



1.

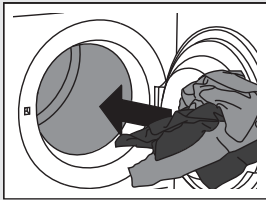
SORT THE FABRICS

Sort the fabric by type and by how heavily soiled the laundry is. Observe the drying symbols on the laundry labels. Close the zippers, hook-and-loop fasteners and buttons.



2.

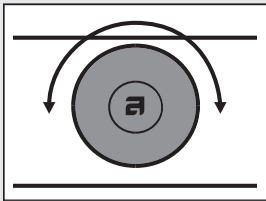
SWITCH ON THE MAIN ON/OFF SWITCH (ON/OFF)



3.

OPEN THE DRYER DOOR AND INSERT THE LAUNDRY.

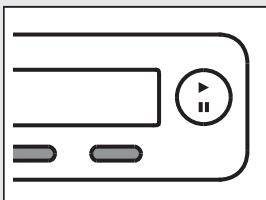
Before doing so, make sure the drum is empty.



4.

CHOOSE THE DRYING PROGRAM.

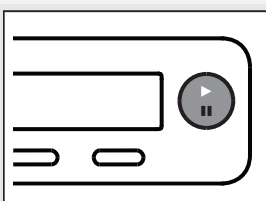
Turn the program selector knob to the desired drying program.



5.

CHOOSE THE PROGRAM SETTINGS.

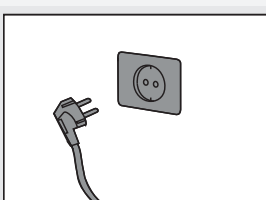
Choose the settings by pressing the relevant buttons.



6.

CLOSE THE DRYER DOOR AND PRESS THE START BUTTON.

Anticipated drying time, in hours and minutes, will be indicated on the display.



7.

END OF PROGRAM

Open the door and remove the laundry from the dryer. Close the door.

Switch off the main on/off switch. Remove the plug from the power outlet.

We reserve the right to modifications.



Gorenje, Partizanska 12, 3320 Velenje, Slovenija
www.asko.com

 TD75.13
SPHP



en (10-17)