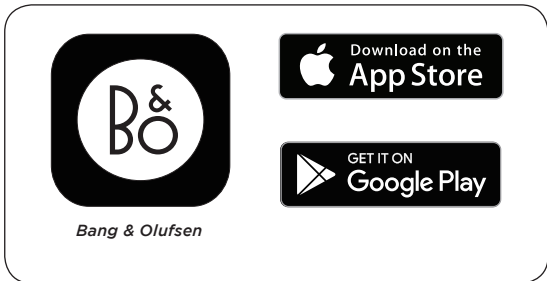


# Beoplay M3

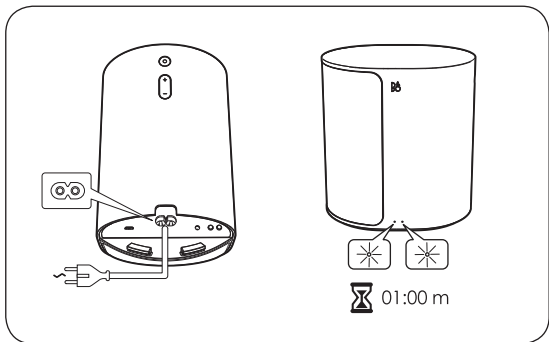
User Guide

## Setting up and configuring your M3



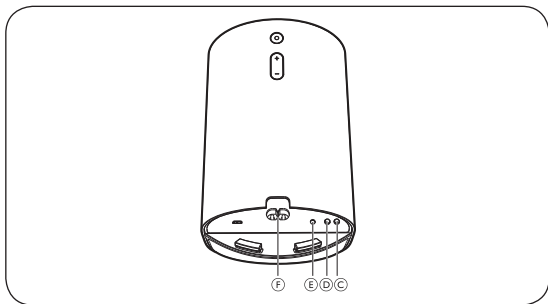
- EN** The box contains Beoplay M3 and a power cable. M3 can be set up as an individual speaker or in a speaker network. Use the **Bang & Olufsen** app to configure and connect your Beoplay M3.

## Connecting your M3



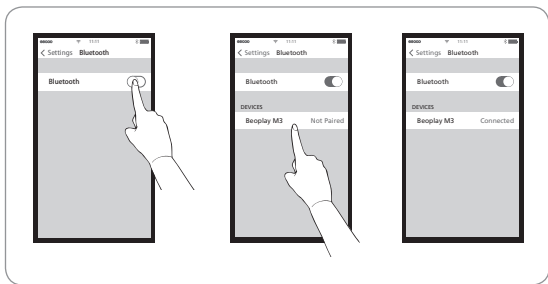
- EN** Connect Beoplay M3 to the mains supply. Wait for 1 minute while both the connectivity indicator and the product indicator are flashing white. After the connectivity indicator flashes orange and a sound prompt is heard, the product is booted up and ready to be set up with the **Bang & Olufsen App**.

## Buttons and connections



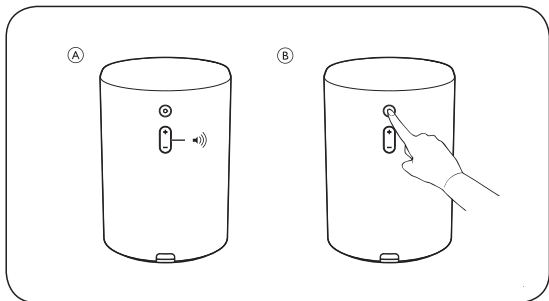
**EN** **C Standby button** Short press to put M3 in standby. Long press to turn M3 off. **D Reset button** Short press both buttons C and D to enter setup mode. When in setup mode, short press both will cancel setup. **E Line in** Mini-jack for connecting external audio sources. **F Power** Connect M3 to mains supply using only the enclosed mains cable.

## Streaming music via Bluetooth



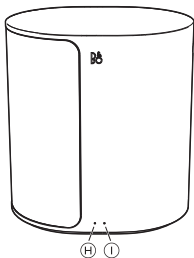
**EN** Beoplay M3 is a connected speaker, using Google Chromecast built-in Multi-room and Apple AirPlay 2. As a point-to-point source, Bluetooth is always open for pairing. Turn on Bluetooth on your device and select Beoplay M3.

## Basic operation



- EN**    **A Volume switch** Press +/- to increase/decrease volume.  
**B Press** During standby, press the Connect/Join button to join existing multi-room groups. If no groups are available, the last connected source will initiate (Bluetooth). During audio playback, press to pause/play. Double press to switch source.

## Indicators



## **EN H Connectivity indicator**

- White (dim): Product is in standby mode.
- White (flashing): Product is booting up.

### Network mode

- Orange (flashing): Ready to setup network connection/ Reconnecting to network.
- Orange (solid): Connected to the network. The wireless signal strength is medium to low.
- White (solid): Connected to the network. The wireless signal strength is high.
- Blue (solid): Not connected to network.

### Bluetooth mode

- Blue (solid): Indicator turns solid blue shortly after Bluetooth pairing is successful or during music playback through Bluetooth.
- Red (solid, shortly): Indicator turns solid red shortly when Bluetooth pairing is unsuccessful.

## **EN I Product indicator**

- Off: Product is in standby mode or switched off.
- White (flashing): Product is booting up.
- Red (solid): Both Indicators turn solid red shortly before during factory reset.
- Red (flashing): Both Indicators flash red at the same time to indicate that software update is in progress. Do not operate the product or switch it off.
- Red (flashing): Firmware error. Disconnect the product from the mains supply and reconnect it.
- Orange (flashing): Indicator is flashing orange when the product is overheating and needs time to cool down.



The Wi-Fi CERTIFIED™ Logo is a certification mark of Wi-Fi Alliance®.



Important information AirPlay 2 are trademark of Apple Inc. registered in the U.S. and other countries.



Google Chromecast and the Google Chromecast badge are trademarks of Google inc.

Google Chromecast

The Bluetooth® word mark and logos are registered trade-marks owned by Bluetooth SIG, Inc. and any use of such marks by Bang & Olufsen group is under license. Other trade-marks and trade names are those of their respective owners.



The Deezer name and logo are trademarks of Deezer. All other trademarks are the property of their respective owners.

